

Label Application System - CLASSIC



Laser Coding Extension

# TRACK & TRACE SOLUTIONS



More Transparency &  
Safety for your  
Track & Trace Process

Label Application System - POUCH

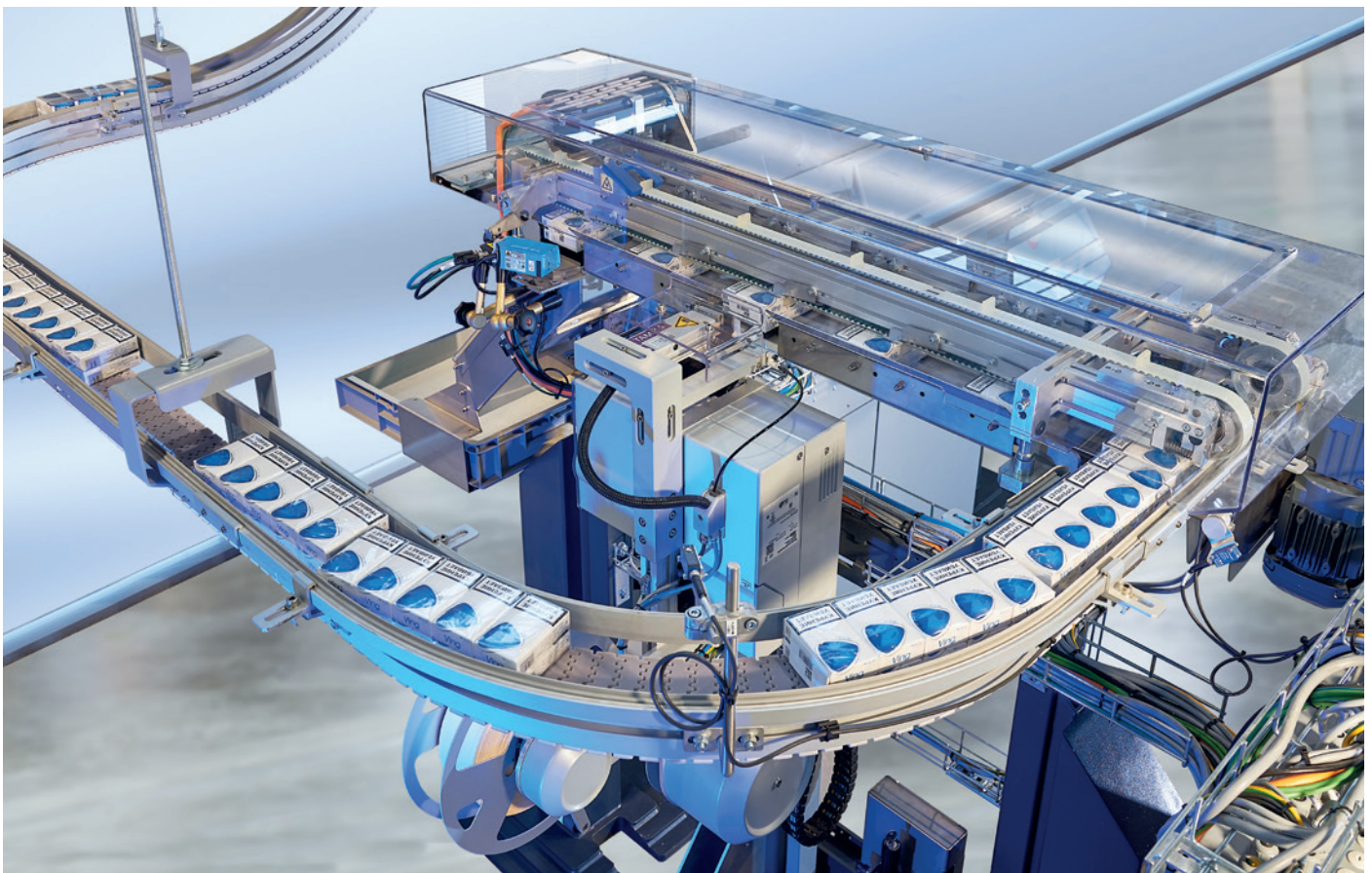




# Label Application System - CLASSIC

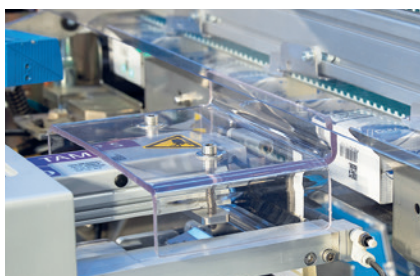
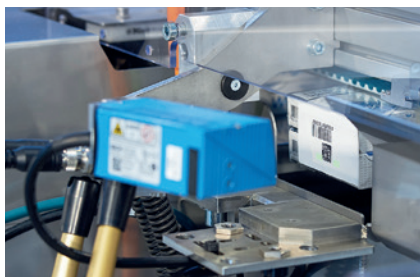
Printing, Application & Verification for Cigarette Bundle Label

- For all Speed Ranges with up to 110 Bundles/min.
- Variable Transport Height (1.400 - 2.800 mm)
- Compact Footprint



## LAS & LCE AT A GLANCE

- Stand Alone System
- Easy to Relocate
- Easy Implementation
- Cost Efficient
- Highest Coding Quality
- Easy Format Change
- Up to High Speed
- Flexible to Use
- Compatible for all Bundle Sizes



- 1 or 2 Side Printing possible
- Camera & Scanner for Label Verification
- Reject Station





# Laser Coding Extension

## Track & Trace Laser Technology for Cigarette Packs

- For all Speed Applications with up to 1.100 Packs/min.
- Fibre Laser Technology (Printing through Cello)
- 100% Traceability & Transparency

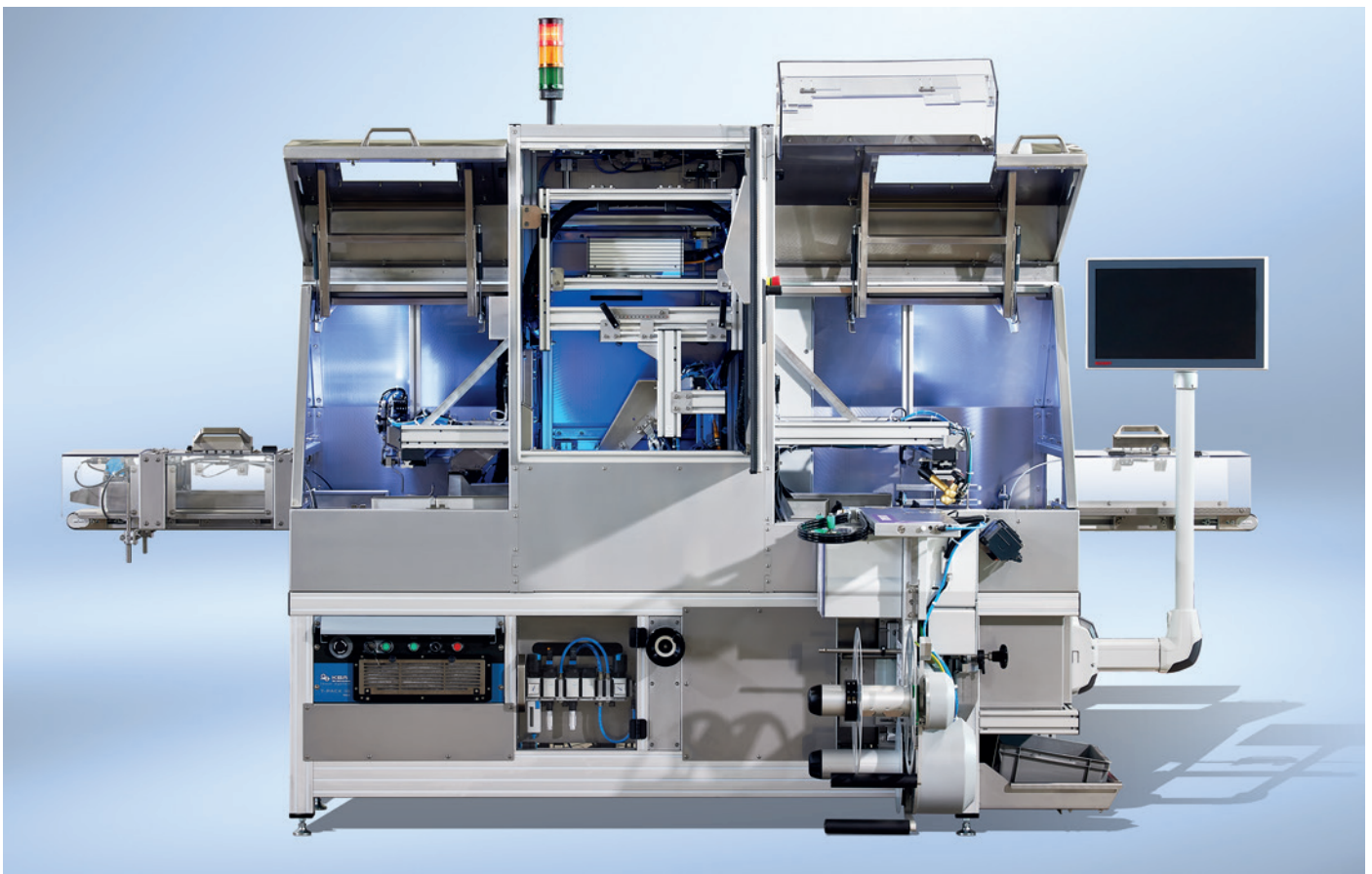


- Laser prints through the Bundle Cello
- Aggregation of complete Bundle at once
- Camera to verify every Pack Code
- Reject Station

# Label Application System - **POUCH**

Pouch Pack Laser Coding and Endlabel Printing for Pouch Bundle

- For Pouch-Bundle Application with up to 35 Bundles/min.
- Fibre Laser Technology (Printing through Cello)
- Combined Standalone Unit



- Laser prints through the Bundle Cello
- Aggregation of complete Bundle at once
- Camera to verify every Pack Code
- Printer & Applicator to apply Bundle Label
- Verification of Bundle Label
- Reject Station

## INFO · CONTACT

### **KÖHL Maschinenbau AG**

17, Am Scheerleck  
6868 Wecker  
Luxembourg

Tel.: +352 27 68 27 - 0

Fax: +352 27 68 27 - 99

[info@koehl-mb.eu](mailto:info@koehl-mb.eu)

[www.koehl-mb.eu](http://www.koehl-mb.eu)

### **Service & Support**

Tel.: +352 27 68 27 - 3838

[service@koehl-mb.eu](mailto:service@koehl-mb.eu)



Additional information