



## ENERGY MANAGEMENT SYSTEM



**EFFICIENT & SUSTAINABLE ENERGY SAVING**  
Improve your ecological footprint!





## Energy data management with **eco.On**

### Optimize energy efficiency - increase productivity!

*In the age of industry 4.0, the goal of an energy management system is the **continuous improvement of a company's energy performance**. Often the energy managers have too little time for the essential task to identify and realize saving potentials.*

***eco.On** helps you with the automated collection and evaluation of the energy data you need as a basis for decision-making. In this way, potential savings can be identified and a continuous improvement process according to the PDCA process is made possible.*

**eco.On** is your sustainable and integrated energy management system, which fulfils the requirements of the DIN ISO 50001 standard and following. It makes company energy needs and consumption transparent and supports processes and procedures to achieve set targets.

**eco.On** makes it possible for you to record and analyse the use of energy and energy consumption, as well as determining the variables which affect this for all media, such as electricity, gas, water, heat or compressed air.

Complex processing and production processes impose specific requirements for efficient energy planning. **eco.On** is convincing here due to its intelligent, scalable and flexible structure, which portrays even complex consumption situations clearly.

Optimizing operating processes through more efficient energy usage with reduced costs is the main priority at all stages of **eco.On** energy management. **eco.On** instigates a longterm, profitable energy policy at all levels of the company.



# Start small - think big

With **eco.**en**** you profit from longterm and sustainable cost reduction through increased efficiency!



## Analysis for benchmarking – identify and record energy flows

The systematic analysis examines consumption data for electricity, water, heat and air, evaluates load profiles and captures key figures. Visualisation of the energy data recorded –for example with Sankey diagram, trend curves, alarm lists through to complex graphic reports– provides information on energy consumers. This allows users to derive optimisation opportunities and to deduce appropriate actions.

## Evaluation and comparison – determine savings potential accurately

The specific savings potential at all levels of industrial automation is assessed according to the analysis. You can create freely editable reports for the various production levels or correlate the established data with lots and products in the corresponding production period. The integrated software tools can easily be used for failure and maintenance management and for handling the control and documentation. This means you can detect peaks in performance and at the same time read off comparisons and developments at any time.

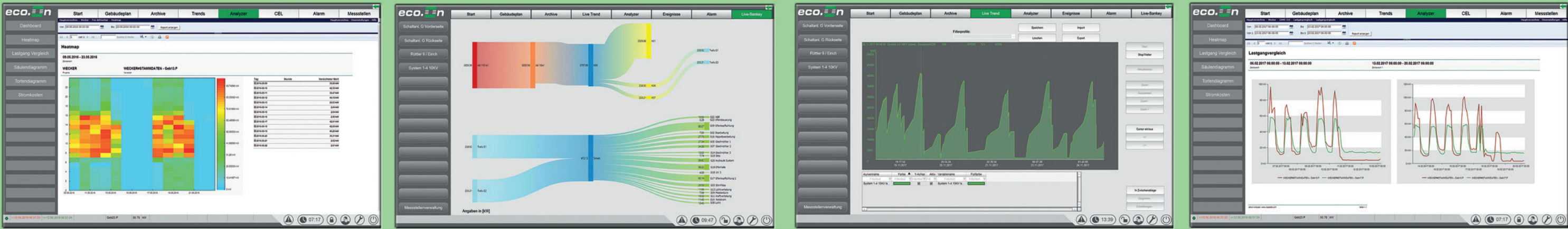


## Realise energy targets by effective measures

**eco.On** links DIN ISO 50001 certification with Overall Equipment Effectiveness (OEE). The real-time OEE calculations guarantee performance-oriented operations management. As a result, plant idle times are reduced.

## Sustained controlling through continuous energy balancing

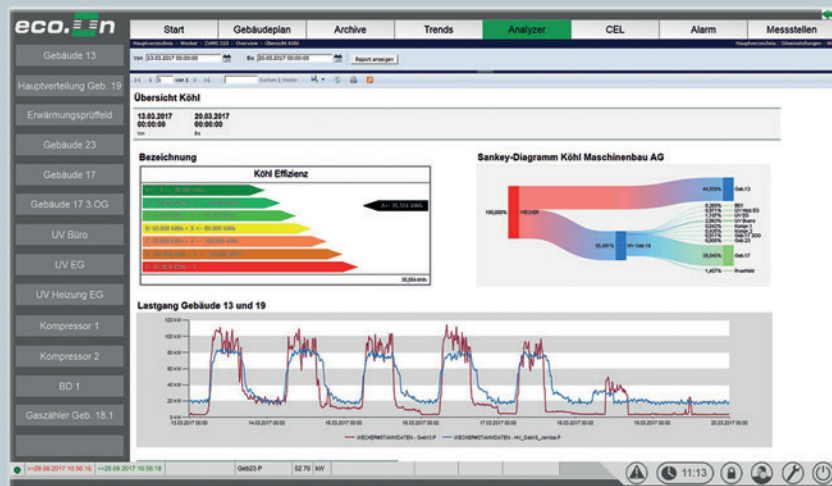
ISO 50001 requires regular checking and evaluation by management of the energy saving measures introduced. **eco.On** energy management is more than purely measuring and documenting energy data. It offers reporting functions such as cost centre reports, pro rata apportionment of consumption to cost centres, weekly and monthly profiles, comparison reports and model calculations. You can use **eco.On** for documenting the implemented adjustments and forecasting energy targets.





## eco.**en** Fast facts

- Data acquisition from the entire infrastructure up to manual input
- Clear presentation of energy consumption data
- Data acquisition from energy consumption to the entire production process
- Energy management reports and key figures in real time & historically
- Finished report templates & own reports with modern graphical design
- From the machine operator to the CEO: flexible access to the analysis
- Multilingual operating system
- Easy integration of existing systems



## More than just software

### Consulting & installation ISO 50001(ff) certified systems

#### eco.On supports you with the certification according to DIN ISO 50001 and following standards

The effective **eco.On** improvement process is based on the PDCA (Plan-Do-Check-Act) cycle described in the standard. **eco.On** guarantees efficient energy policy from introduction through implementation to monitoring and regular evaluation by senior management.

#### eco.On is available everywhere, every time

Clear visualisation and intuitive operation contribute to the user friendliness of **eco.On**. Communication is "to go" on Smartphone or at the workplace.

By automation of information flows, all users from the production level to the CEO can receive their detailed overview of energy consumption and costs at all times. This means that it is possible to react quickly to changed situations.

#### eco.On promotes energy consciousness from management through to production level

Efficient energy supply and use works if everyone is included in the optimisation process, from production through to management.

**eco.On** supports the persons involved in energy management with comprehensive, target group oriented reports. Thanks to the high degree of transparency, everyone in the team can make a contribution to efficient use of the valuable energy resource.

#### eco.On automatically creates KPI & EnPI analyses

**eco.On** collects energy-relevant information from the entire corporate infrastructure, automatically generates reports and sends them to defined recipients. The evaluation of the key figures is used to monitor the success of optimisation measures or to compare processes/productions.



## INFO · CONTACT

### **KÖHL Maschinenbau AG**

17, Am Scheerleck  
6868 Wecker  
Luxembourg

Tel.: +352 27 68 27 - 0

Fax: +352 27 68 27 - 99

[info@koehl-mb.eu](mailto:info@koehl-mb.eu)

[www.koehl-mb.eu](http://www.koehl-mb.eu)



Additional information

### **Service & Support**

Tel.: +352 27 68 27 - 3838

[service@koehl-mb.eu](mailto:service@koehl-mb.eu)



# KÖHL

SOLUTIONS WITH POWER