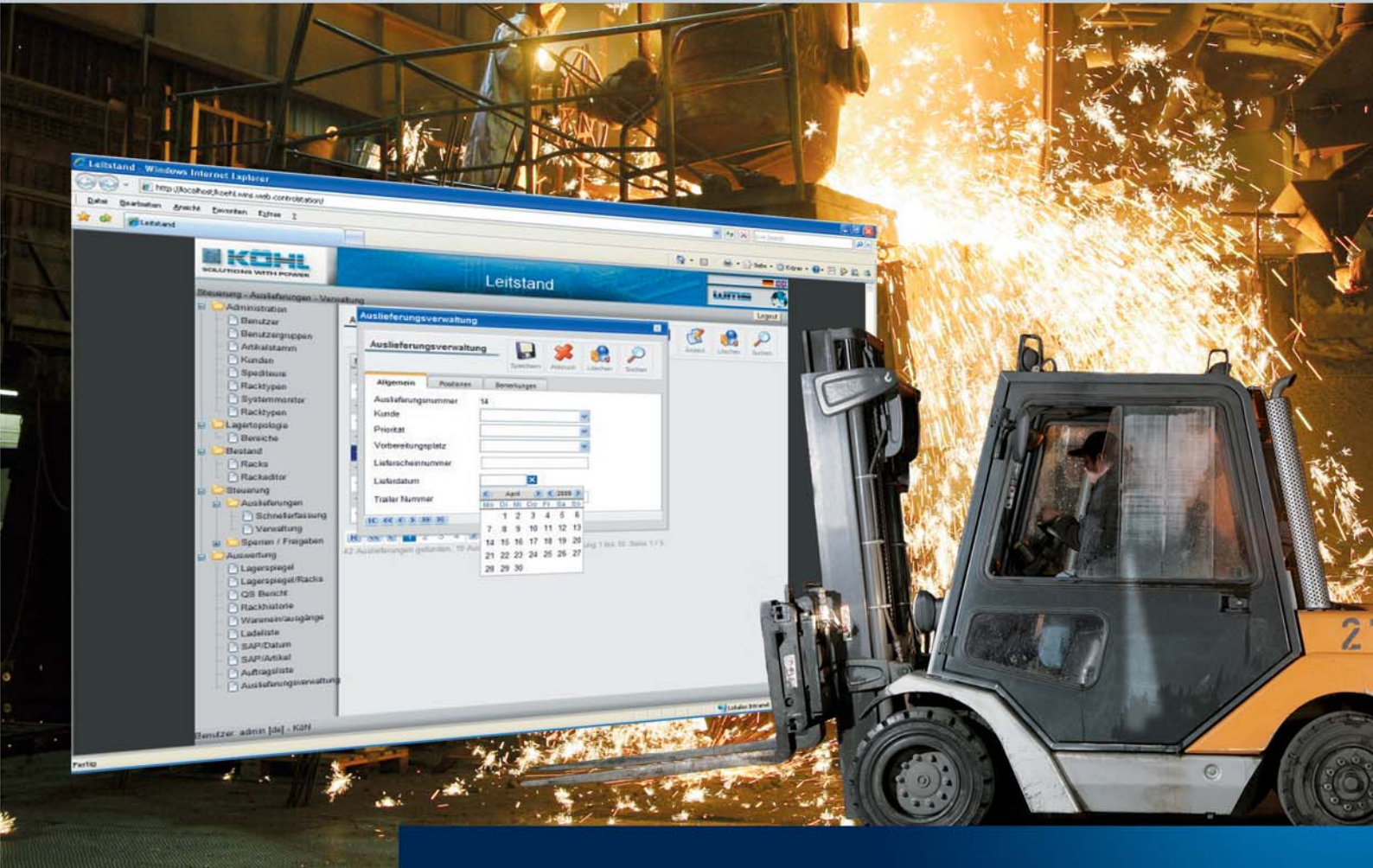




FORKLIFT CONTROL SYSTEM



Our innovative forklift control system optimizes in plant goods transport.

FCS Forklift control system - ensuring the efficient integration of your forklift fleet in the flow of goods!

The complexity of today's in plant goods transport needs intelligent logistics. The KÖHL forklift control system will optimize your forklift fleet by centrally managing any transport order. All orders which arise were automatically transferred to the mobile forklift terminals, always paying attention to account priorities and the availability of resources. Due to its standard interfaces our FCS allows an integration into a system consisting of warehouse management, material flow control and ERP system without any problems.

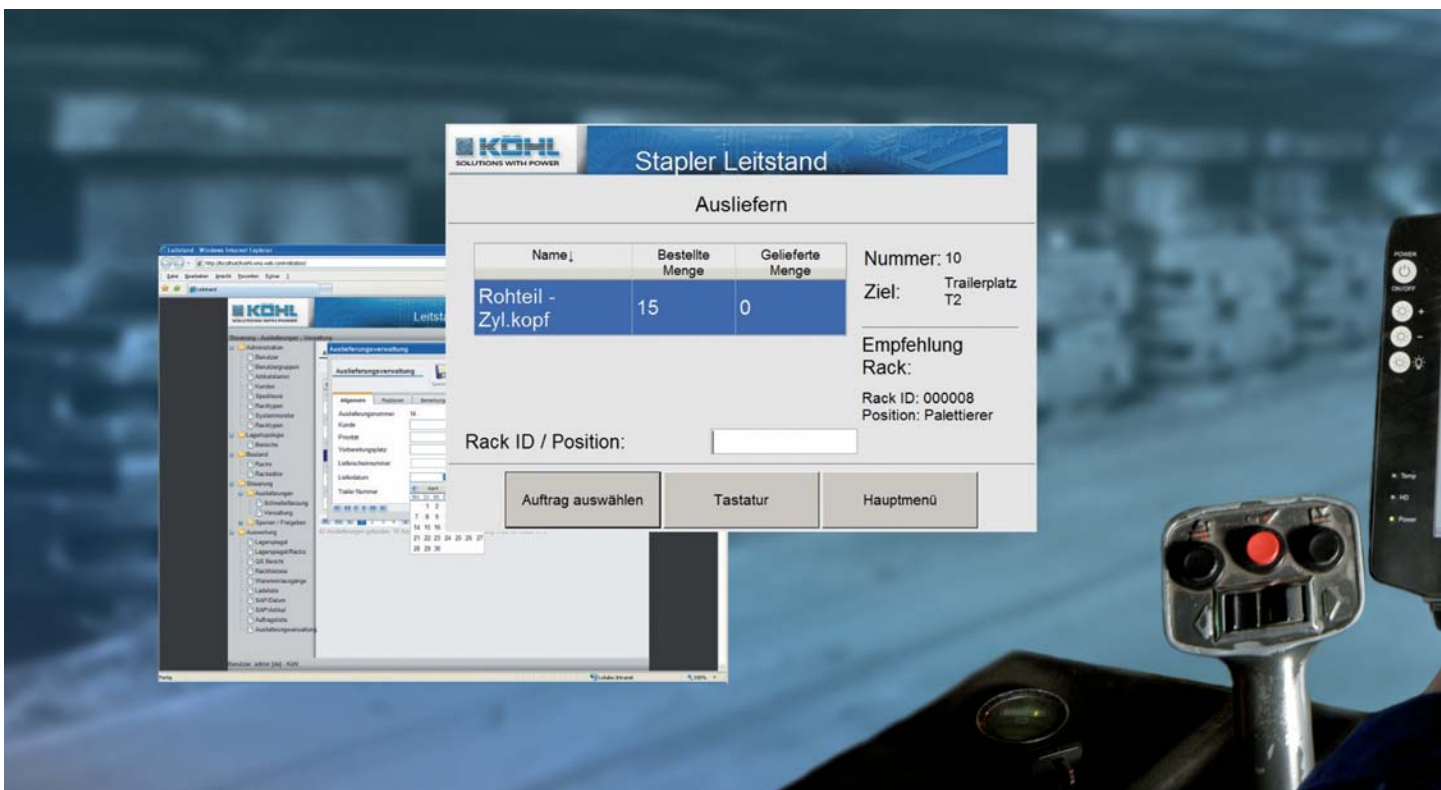
Intelligent Forklift Fleet Routing

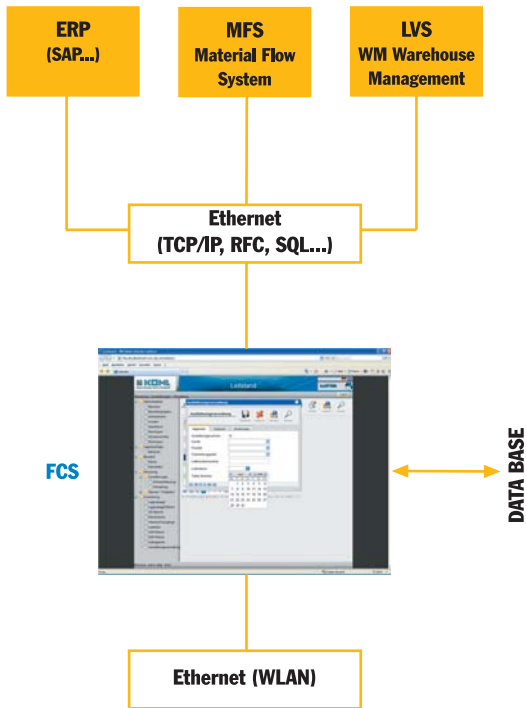
Forklift-dependent transport processes, such as goods receipt, picking and shipping, for example, can be intelligently managed and documented via the KÖHL forklift control system.

Besides vehicle demand optimization, the outstanding benefits of the FCS forklift control system also include

- a reduction of empty runs ("deadheading"),
- traceability, and
- a higher process quality.

Transport orders are automatically transferred to the mobile forklift terminals.





FCS Forklift Control System - Intelligent architecture makes the handling really easy!

Our FCS is realized as a web-based client/server solution, which means that the user only needs a standard web browser as a user interface for the FCS server. The following web applications are available:

- FCS system administration
- FCS operating processes

FCS System Administration

The FCS system administration allows the user to initiate manual drive orders, create the system configuration and manage resources like vehicles and users. In addition, extensive reporting supports the optimization of the logistic processes. The master and movement data of the system are meanwhile stored in a data base.

FCS Operating Processes

The following FCS operating processes are available and can be customized:

- Authentication via login card
- Sequential transport order processing
- Storage / stock removal / stock transfer
- Picking / unpicking
- Information queries for warehouse and transport units
- Stock entry for physical inventory

FCS Server

The main instance is provided by the FCS server, which can be linked to any chosen higher-level logistic system via its standardized interfaces. The FCS server software can be run on all Java-enabled operating systems (Windows, Linux, Unix...). The communication between the server and the mobile clients is done via WLAN.



INFO · CONTACT

KÖHL Maschinenbau AG

17, Am Scheerleck
6868 Wecker
Luxembourg
Tel.: +352 27 68 27 - 0
Fax: +352 27 68 27 - 99
info@koehl-mb.eu
www.koehl-mb.eu



Additional information