

FAS

FLAVOUR APPLICATION SYSTEM



European Patent
EP 2.016.840
EP 2.526.788

More than
400 FAS installed

FAS4 Evolution - the future of online flavouring
Traditional from outside - innovative inside

HEINEN  KÖHL
TOBACCO-SOLUTIONS WITH POWER

FAS 4 Evolution from the market leader in RRP/NGP and RMC

Your requirement is our development

Thanks to more than 35 years experience and to continuous developments HEINEN KÖHL has upgraded and improved the Flavour Application System. The solution provides more advantages for our customer's.

The **new FAS 4 Evolution** improves the process of flavour application into tobacco, filter and during NGP production. The **FAS 4** convinces with innovative software to be prepared for the digital world of production.

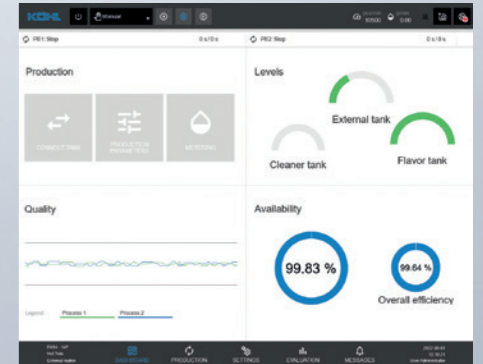
FAS at a glance

- Most precision dosing system available (FWC)
- Reduce start up waste to zero (FWC)
- Further improved production reliability (SPM)
- State of the art design & software
- New cleaning concept for rapid flavour change
- Highest possible Overall Equipment Efficiency (OEE)
- Easy & comfortable handling
- Continuous improvement process
- Combinable to all in use makers
- For all available flavours



New software

- Feedforward controller (FWC)
- Windows 10 / TwinCAT 3.1 / Zenon 8
- System pressure monitoring (SPM)
- Guided process flow & workflows
- Machine and event log
- Production data collection
- Data extraction
- Alarm management
- Maker simulation
- HMI bus, IPC and IO diagnose



Variants

- Single track/Twin track
- Heated (pure menthol)
- ATEX (alcohol-based flavours)
- WBF (powder-liquid suspension)
- Flavours with increased viscosity
- Cigarette (tobacco)
- Cigarette filter/ flavour thread
- RRP/NGP/RMC
- Paper/CLT
- 4 different dosing systems:
1g/min up to 480g/min flow rate per track



Unique

- Feedforward controller (FWC)
- RFID Identification System:
Full traceability from filling to application
- Hermetically closed tank system
- Quick flavour change
- Patented system
- Modular design
- Maximum flexibility



INFO . CONTACT

KÖHL Maschinenbau AG

17, Am Scheerleck
6868 Wecker
Luxembourg

Tel.: +352 27 68 27 - 0
Fax: +352 27 68 27 - 99

info@koehl-mb.eu
www.koehl-mb.eu



Additional information

Service & Support

Tel.: +352 27 68 27 - 3939
service-fas@koehl-mb.eu